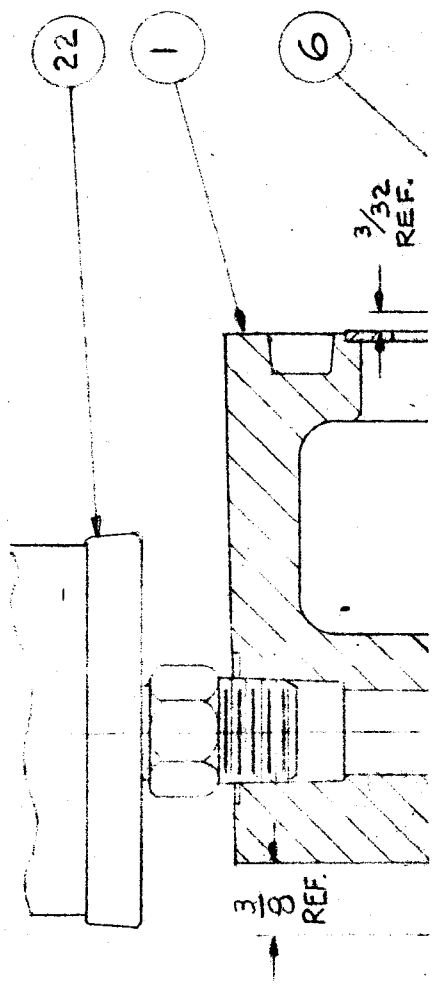
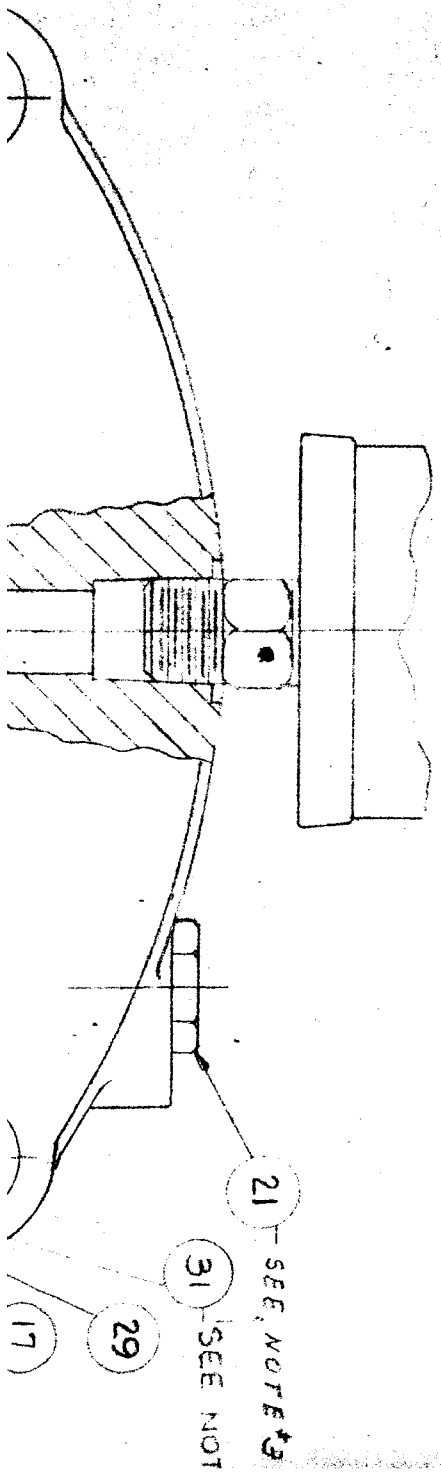


| ITEM NO. | DESCRIPTION | REMARKS |
|----------|---|---|
| 19 | TETRASEAL $\frac{1}{16}$ I.D. x $\frac{7}{8}$ O.D. x $\frac{3}{32}$ W. - BUNA 'N' | GOSHEN # TS 33 - 115 |
| 20 | | |
| 21 | PLUG WITH 'O' - RING | IMPERIAL-EASTMAN # 721-FSO, $\frac{5}{16}$ TUBE |
| 22 | OILER | GITS # 1054A STYLE 'CT' |
| 23 | ELASTIC STOP NUT, $\frac{3}{8}$ - 24 UNF-3B, LIGHT THIN | ESNA # 29 NTE - 064 |
| 24 | | |
| 25 | BINDER HD. MACH. SCREW # 8-32 N.C. x $\frac{3}{8}$ LG. - STEEL, NP | |
| 26 | FIL. HD. MACH. SCREW # 6-32 N.C. x $\frac{3}{8}$ LG. - " " | |
| 27 | LOCK WASHER, STL SPLIT - # 8 ($\frac{7}{16}$ x $\frac{1}{32}$) | |
| 28 | LOCK WASHER, STL, SPLIT - # 6 (-047 x .032) | |
| 29 | TETRASEAL $\frac{1}{16}$ I.D. x $\frac{13}{16}$ O.D. x $\frac{1}{16}$ W. BUNA 'N' | GOSHEN # TS 33 - 017 |
| 30 | | |
| 31 | OIL INDICATOR SLEEVE | |
| 32 | | |
| 33 | | |
| 34 | | |
| 35 | 'O' RING $\frac{5}{16}$ I.D. x $\frac{7}{16}$ O.D. x $\frac{1}{16}$ W. - BUNA 'N' | |
| 36 | SOCKET HD. CAP SCREW # 6-32 N.C. x $\frac{3}{4}$ LG. - STEEL | |



| ITEM NO. | PC. NO. | DESCRIPTION | REMARKS | NO. REQ'D | PC. NO. |
|----------|---------|---|------------------|-----------|---------|
| 1 | 41-3925 | TRANSMISSION HOUSING - MACHINING | CASTING # 1377-4 | 1 | 41-40 |
| 2 | 41-3941 | TIMING BELT PULLEY - DRIVER | | | |
| 3 | 41-3980 | DRIVE SHAFT | | 2 | 41-40 |
| 4 | 41-4214 | DRIVEN PULLEY | | 1 | 41-40 |
| 5 | 41-4225 | SEAL CARTRIDGE SUB-ASSEMBLY | | 1 | 32483 |
| 6 | 41-3983 | DRIVE SHAFT BEARING - RIGHT | | | |
| 7 | 41-3984 | TRANSMISSION HOUSING COVER | | 3 | 32374 |
| 8 | 41-3985 | $\frac{3}{8}$ GRIP SPRING | | 4 | 32375 |
| 9 | | | | 3 | 32548 |
| 10 | | | | 10 | 32545 |
| 11 | 41-3988 | $\frac{3}{8}$ GRIP SPRING SPACER - LEFT | | 1 | 41-42 |
| 12 | 41-3989 | " " - CENTER | | | |
| 13 | 41-3990 | " " - RIGHT | | 1 | 41-41 |
| 14 | | | | | |
| 15 | | | | | |
| 16 | | | | | |
| 17 | 41-3996 | OIL LEVEL INDICATOR WINDOW | | 1 | 41-39 |
| 18 | 41-4020 | OIL FLOW INDICATOR SUB-ASSEM. | | 6 | 32558 |



B C D E F G H I J K L M N

FORM 1412

NOTES:

- 1. PRESS ITEM # 31 IN PLACE WITH SLOT IN DOWN
- 2. POSITION & BUFFED SURFACE OUT
- 3. OUTER SURFACE OF LIP SEAL IS TO PROJECT APPROX $\frac{1}{16}$ " BEYOND FACE OF CARTRIDGE ITEM # 5
- 4. PAINT HEAD OF ITEM # 21 WITH RED LACQUER

4 MTS HOLES FOR
 $\frac{5}{16}$ DIA.
CAP SCREWS

