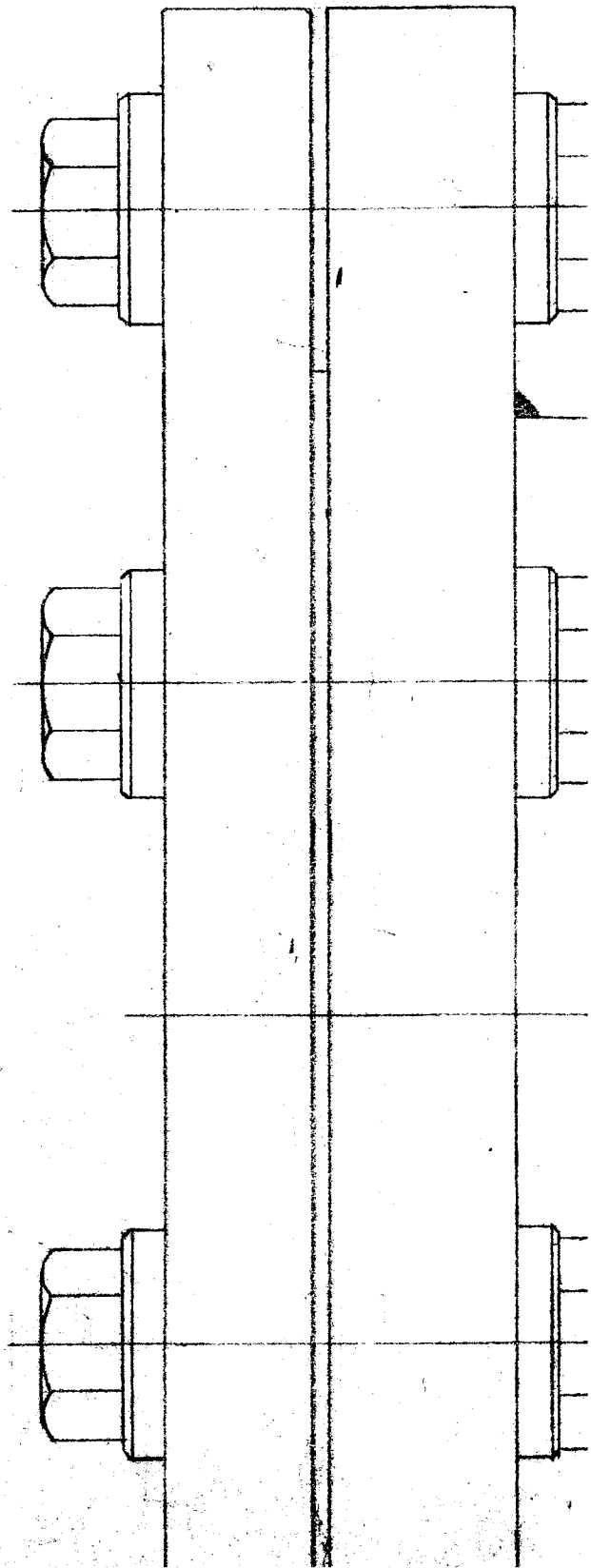
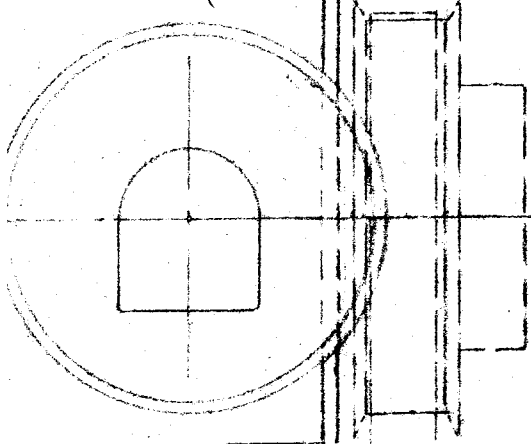
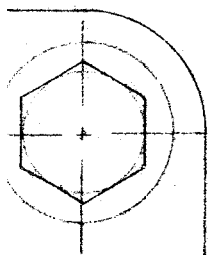
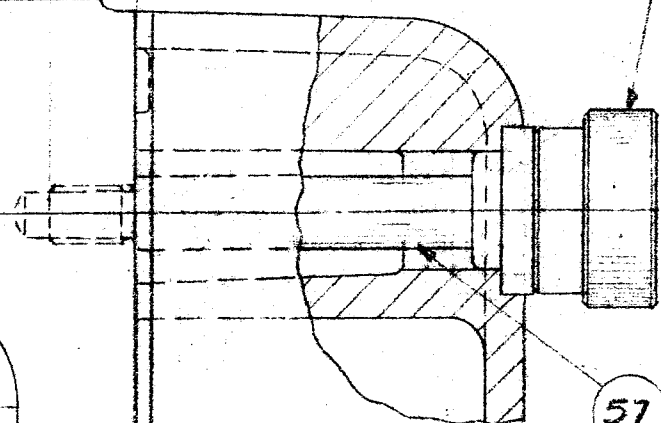
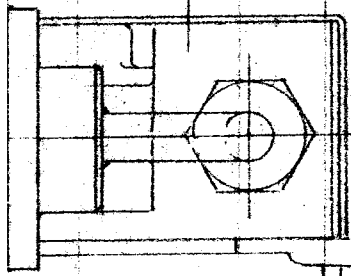
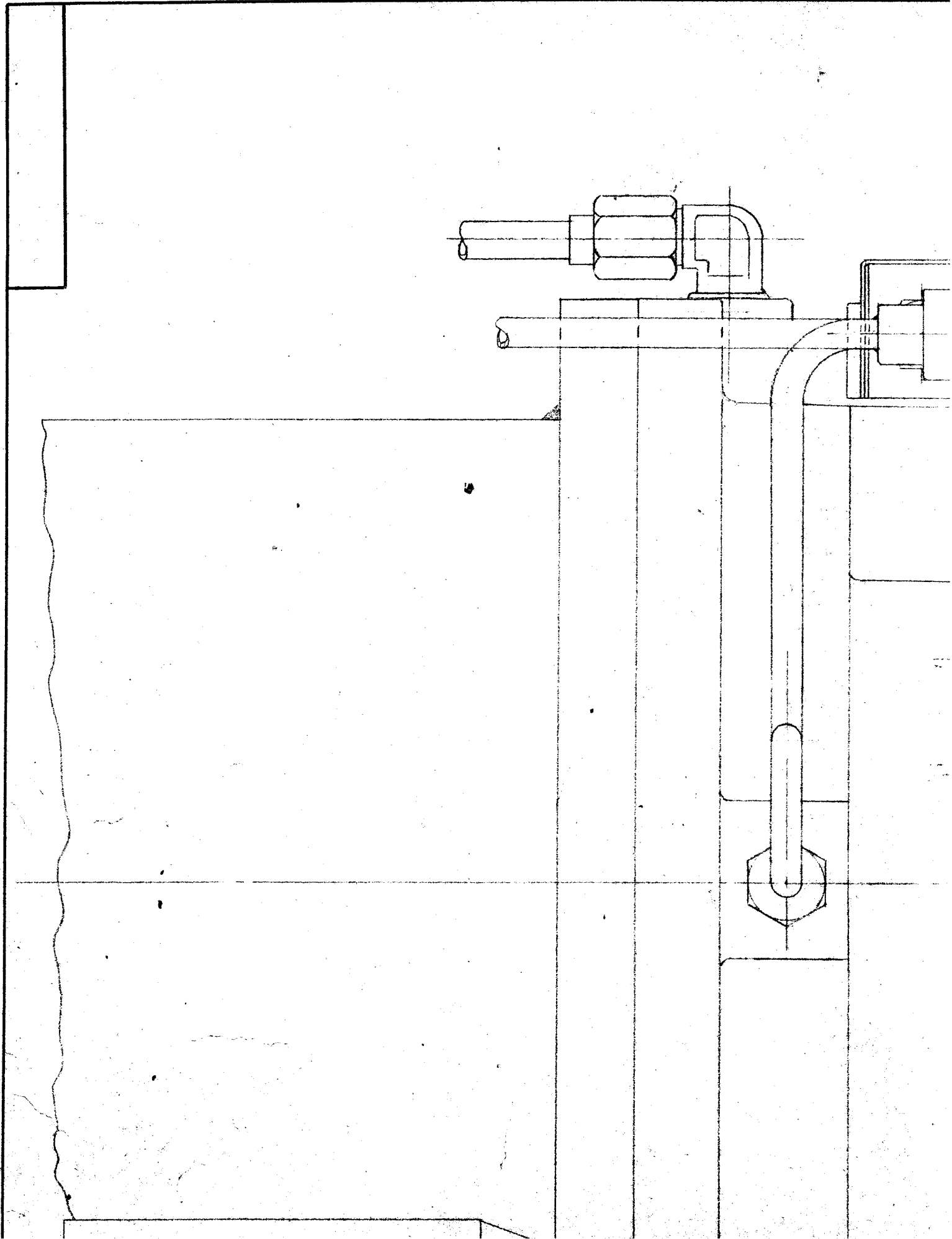
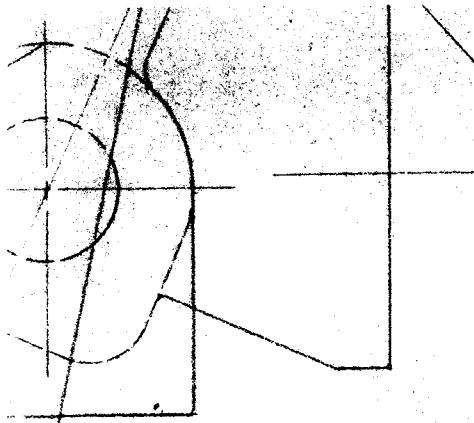


$\frac{7}{16}$ REF







PAINT BOTH PLUGS
WITH RED LACQUER

ISSUED

MAY 20 1966

THIS PRINT SUPERSEDES
ALL OTHER PRINTS PRIOR
TO THIS DATE.

THE WELCH SCIENTIFIC CO.

BO MOLECULAR PUMP

The Welch Scientific Company

Chicago, Illinois, U. S. A.

Finish	Sheet No. 2
	No. of Sheets 4

Drawn By A.M.

App'd.

Date 5/21/65

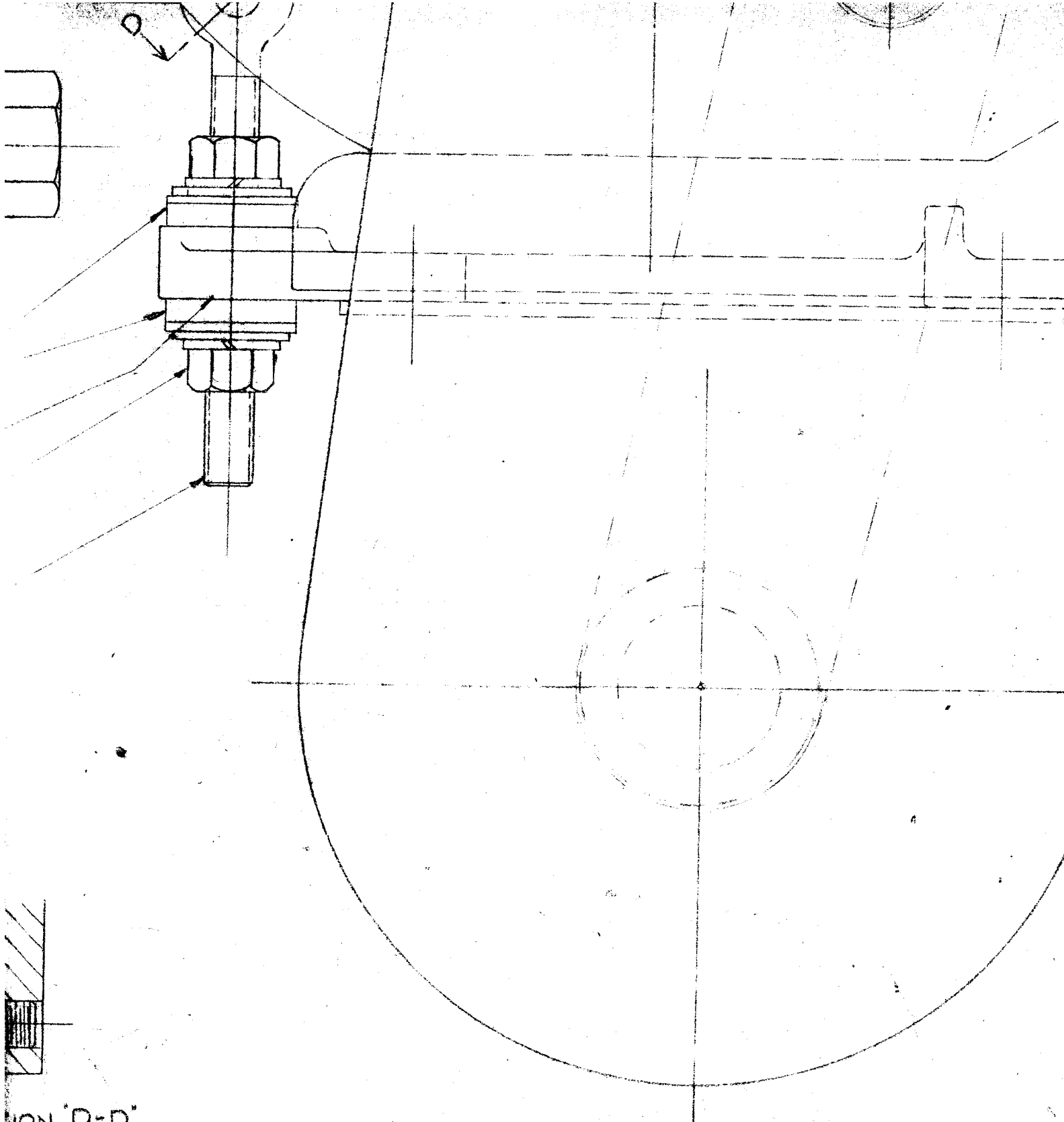
Checked By

App'd.

Scale FULL

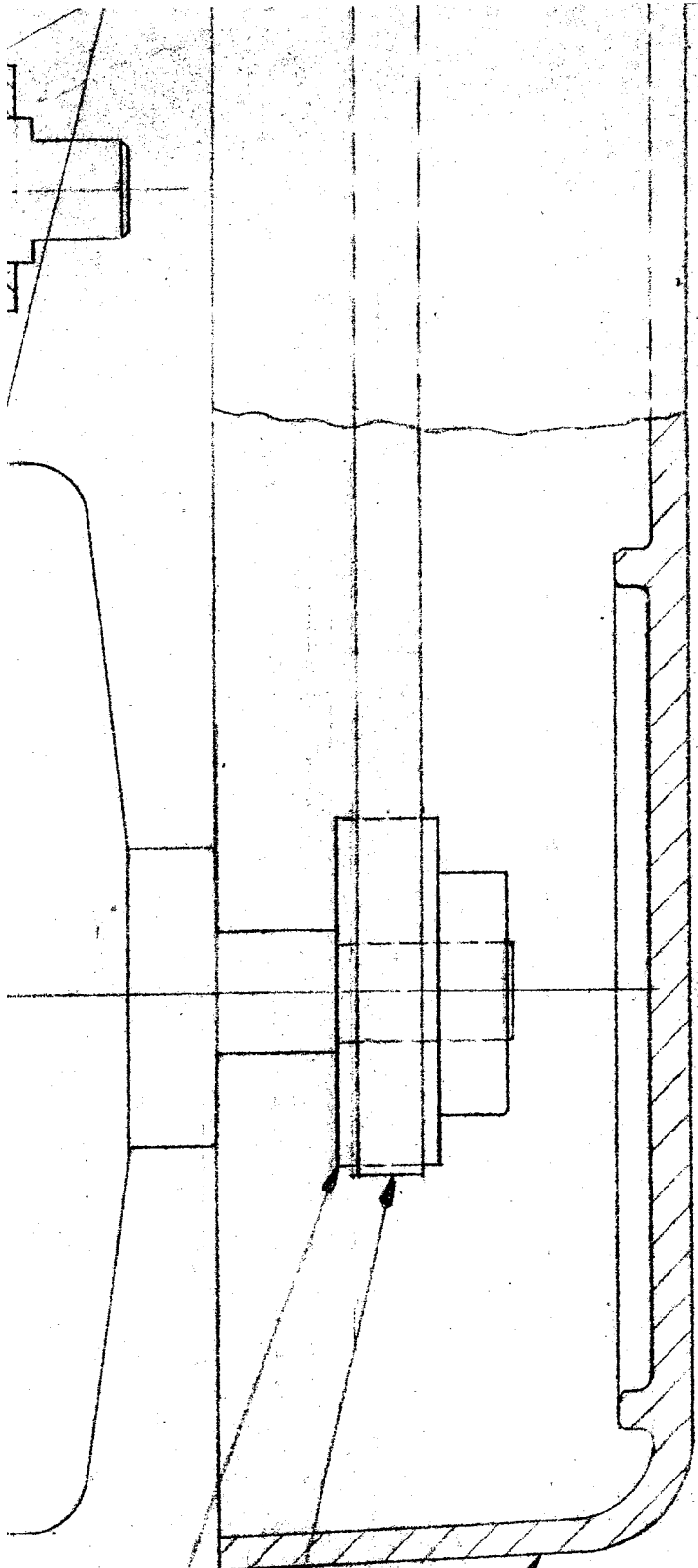
UNLESS OTHERWISE SPECIFIED
FRACTIONS MAY VARY ±.010
DECIMALS MAY VARY ±.005

D CAT. No. 3102

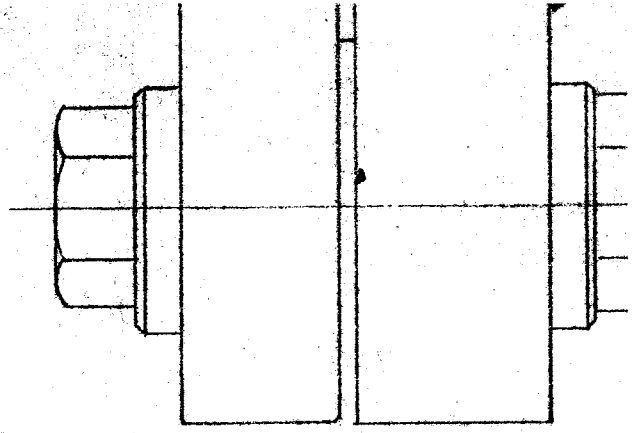


SECTION "D-D"

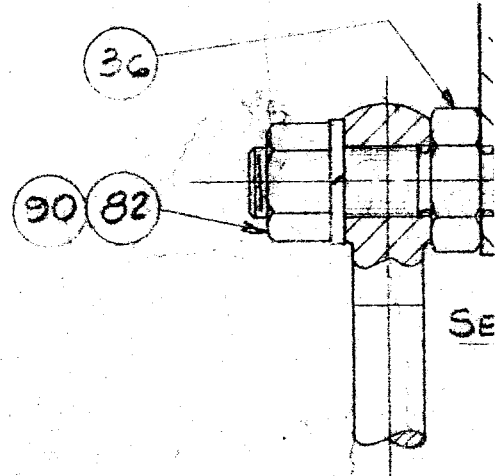
			Title
			Used
			Made
Revisions	By	Date	



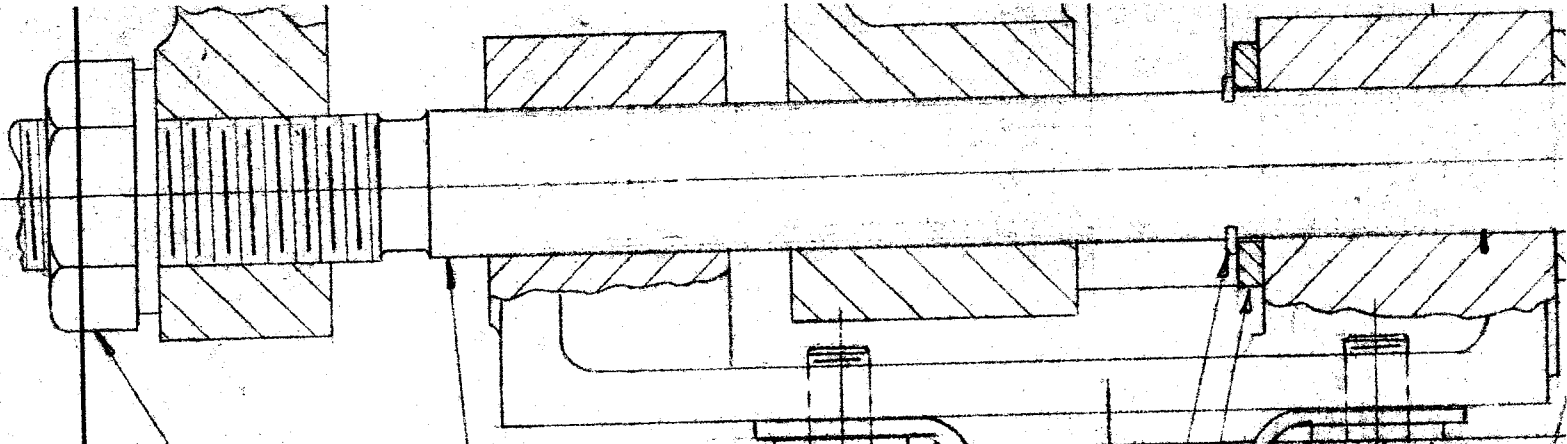
- 12
- 44
- 53



- 37
- 8
- 84 82
- 35



- 36
- 90 82



- A
- B
- C
- D
- E
- F
- G
- H
- J
- K
- L
- M
- N

- 97
- 65
- 32
- 75
- 76
- 89
- 50
- 85
- 33
- 81
- 34